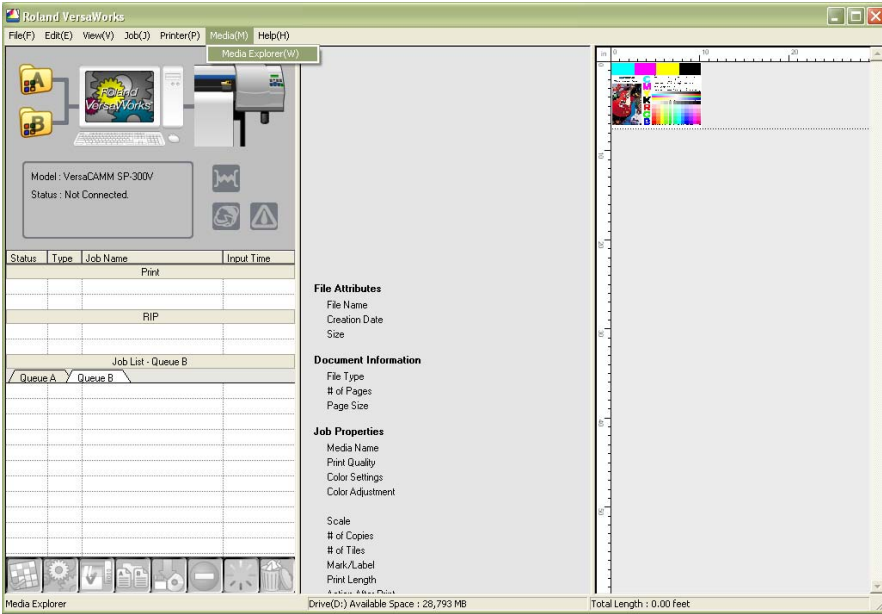




Media Name: 6011PE Monomeric 90my micro porous glossy output **Resolutions:**720x720 **Printer:** Roland Proll V Series

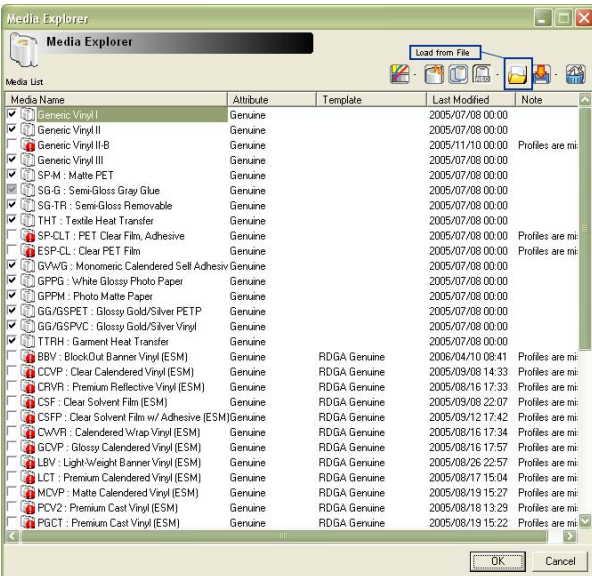
Important: Please make sure the following criteria are met for optima color fastness. Room humidity should be kept above 30% and below 60%. Room Temperature should be kept above 50F and below 75F. Low humidity and other items such as rugs or carpets around the printer can cause Static electricity which can show as anomalies on your prints. High humidity and high temperatures can cause curling of media or head strikes from the printer.



STEP 1 - Start

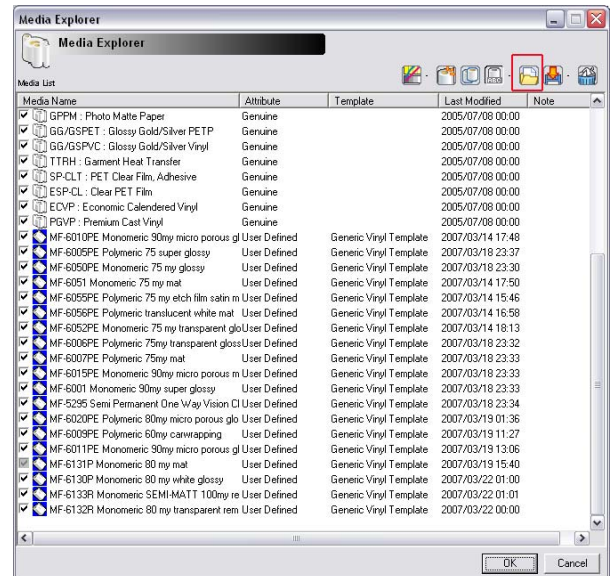
After Downloading profile, Please unzip and place into a folder you have easy access, or your Desktop.

Upon opening your Roland VersaWorks RIP Program, use your cursor over the **“Media”** menu and scroll down to select **“Media Explorer”**.



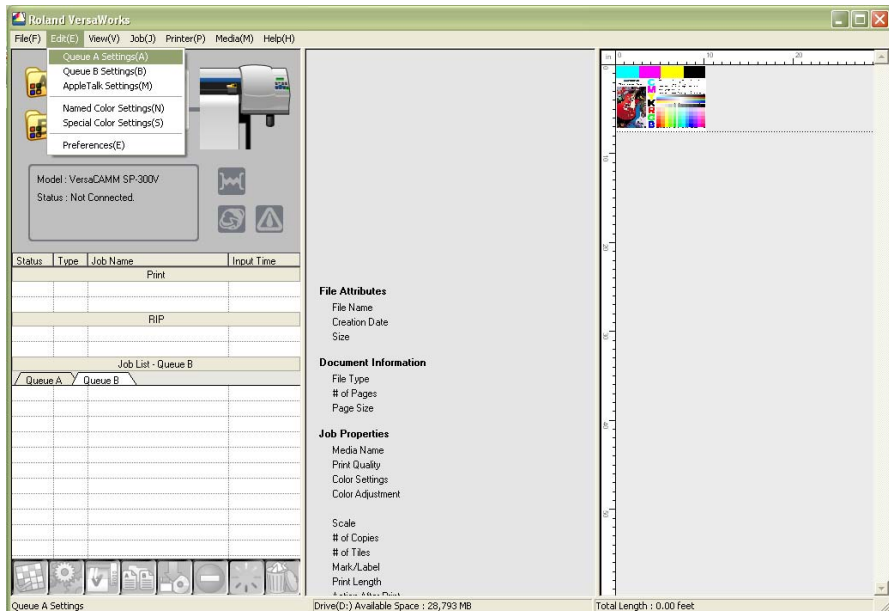
STEP 2 - Importing the Media Profile

In Media Explorer choose the folder icon. This will also say to **“Load from File”**. In the “Open Dialog box browse for your unzipped media profile. *(Hint it should have an extension of .rml)* After selecting the media profile choose **“Open”**.



STEP 3 - Verifying the Media Profile

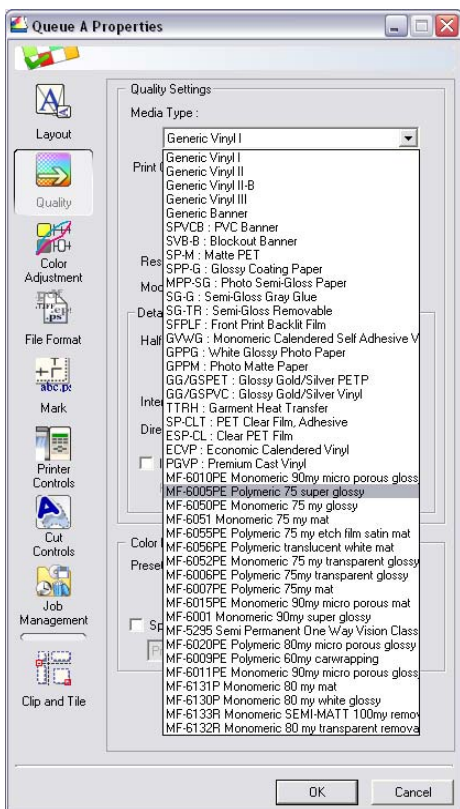
Once you have chosen your media profile, please make sure it now shows itself on the list of available media in the **“Media Explorer”** Dialog box and click **“OK”**.



STEP 4 - Applying Media Profile

Once you have verified that the Media profile has been installed correctly, you will be able to choose it as an available print media.

Go to the Main menu and choose **“Edit”** then select the Queue (A or B) that will use this new media profile.



STEP 5 - Verify your Settings

Choose the **“Quality”** tab from the menu structure on your left hand side. Here you will be able to find the new Multi-fix media you have just imported. All settings are pre-saved with this media including printer temperatures.

After which please go to Color Management in lower part of window and click on **“Properties”** and then **“Load”** and browse for the file called **“CustomPreset - Multi-fix Media.rcs”**

Once you have chosen the media, please make sure to set your **“Printer Controls”** to **“Media Defaults”**.

Congratulation you are ready to print.

To find out more about this and many other product...

Contact Graphic Products

Visit us online at: <http://www.multi-fix.com>

Customer Service

Phone: +32 (0)89 35 31 15

Inside Sales

Phone: + 32(0)89 35 31 15

Fax: + 32 (0)89 35 21 91

E-mail:

icc@multi-fix.com